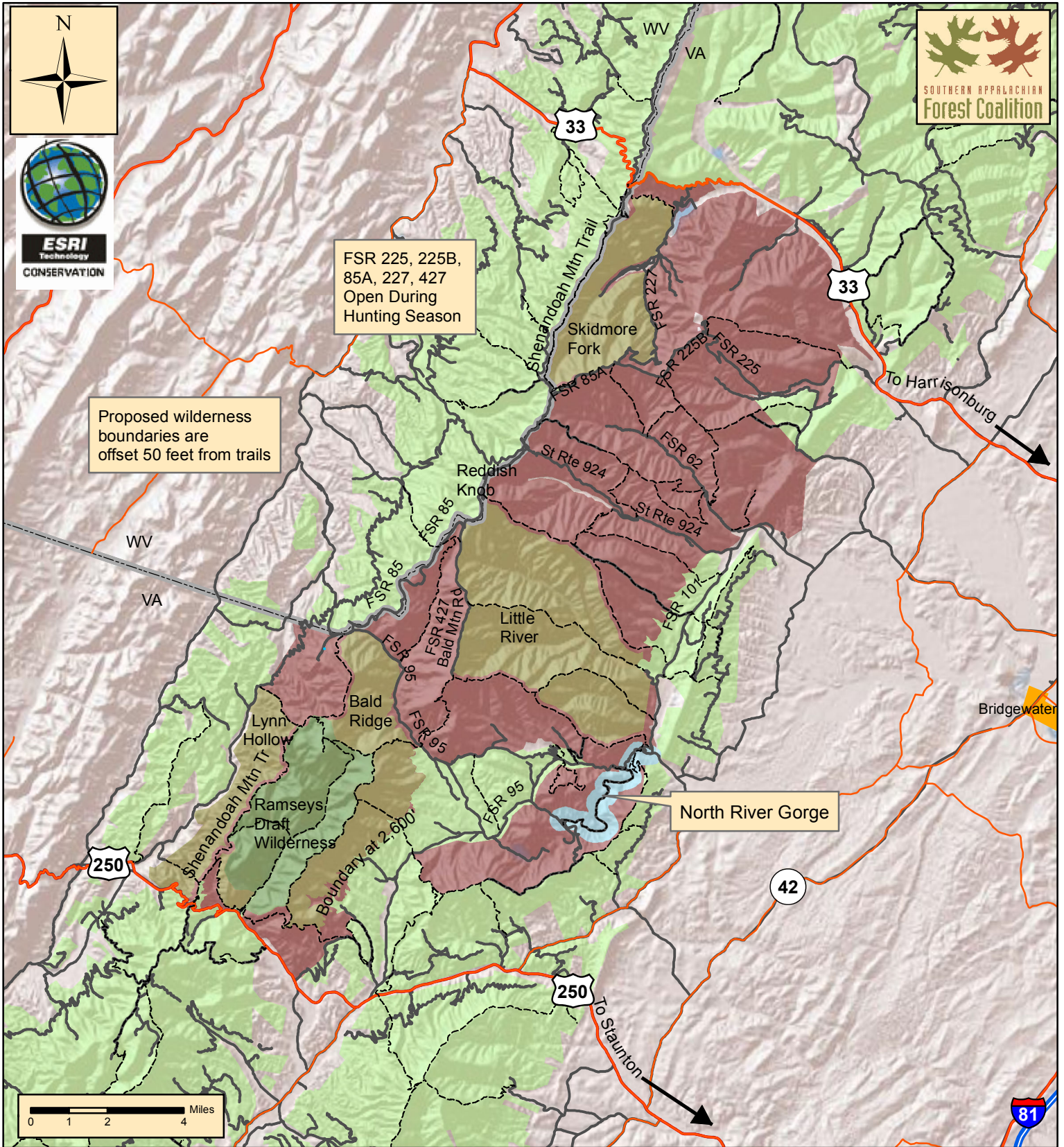


# Shenandoah Mountain National Scenic Area Proposal



FSR 225, 225B, 85A, 227, 427  
Open During  
Hunting Season

Proposed wilderness  
boundaries are  
offset 50 feet from trails

North River Gorge

- |                               |                             |                             |
|-------------------------------|-----------------------------|-----------------------------|
| Proposed Shenandoah NSA       | Limited Access Highway      | State Boundary              |
| Proposed Wilderness           | US Highway                  | Trails                      |
| Existing Wilderness           | State and County Highway    | Forest Service System Roads |
| Eligible Scenic River Segment | Other National Forest Lands |                             |